

Vermont 2001 Safety Belt Usage Survey

The year 2001 represents the sixteenth annual safety belt observational survey conducted under the auspices of the Vermont Governor's Highway Safety Program and the fourth under the revised methodology.

This survey methodology was developed by the Institute for Traffic Safety Management and Research, University at Albany, State University of New York to be consistent with the National Highway Traffic Safety Administration's 1998 guidelines for state observational surveys. The differences between the old and new methodologies and the steps taken to implement the new methodology were highlighted in the 1998 report

This year's field survey was conducted predominantly during September, 2001. Data were collected using paper data forms for front seat occupants of Vermont registered vehicles wearing safety belts at 82 designated sites throughout the state. In a few instances, designated backup sites were substituted for the primary sites where traffic and roadway geometry precluded a safe observational point in conformance with the study design and the instructions of the field manual.

The specific sites were selected by the Institute for Traffic Safety Management and Research and NHTSA. The selection was stratified by region of the state and roadway volume as VMT (vehicle miles traveled). However, due to an absence of actual roadway volume data for local roads, roadway functional classification was used as a surrogate for this characteristic.

Data were collected for all days of the week including weekends. Appendix A details the sites and the date/time each location was observed. The results are displayed in Tables 1a and 1b.

Table 1a. Driver Safety Belt Usage Rate

	High	Medium	Low	Total
North	73.4%	63.2%	62.3%	65.6%
South	68.5%	65.6%	66.5%	66.6%
Chittenden	75.0%	64.6%	77.1%	72.7%
State-Wide				67.6%

Var = 0.0166 (1.7%) Std Err = 0.1902 (19.0%)

Table 1b. Occupant Safety Belt Usage Rate

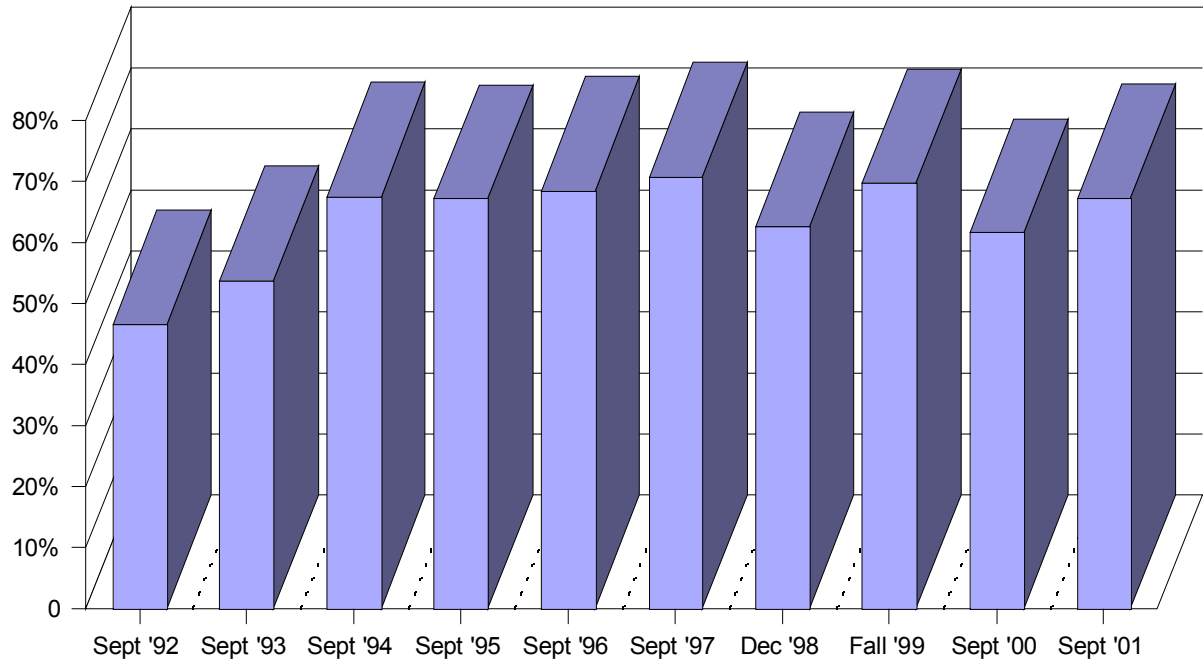
	High	Medium	Low	Total
North	73.0%	63.7%	61.0%	65.2%
South	68.5%	65.8%	65.9%	66.5%
Chittenden	75.6%	64.2%	76.5%	72.8%
State-Wide				67.4%

Var = 0.0149 (1.5%) Std Err = 0.1812 (18.1%)

The percentage of drivers with belts was 68%, and the percentage of total occupants with belts was 67%. Detailed results for all sites are presented in Appendix B.

The statistical methods used to evaluate the observational data are in conformance with those developed by NHTSA and the Institute for Traffic Safety Management and Research, University at Albany, State University of New York. They were described in complete detail in the 1999 report.

Safety Belt Historical Utilization to 2001



 Safety Belt Usage

Appendix A: Observational Schedule and Sites

SiteID	Date	Time	Name	SiteID	Date	Time	Name
2307	09/20/01	8:34	Jps	1312	09/10/01	10:54	Jps
2201	09/20/01	6:49	Jps	1209	09/09/01	11:50	Jps
2308	09/20/01	7:40	Jps	1307	09/21/01	2:06	Jps
2207	09/19/01	4:20	Jps	1308	09/21/01	1:03	Jps
2106	09/13/01	4:19	Jps	1202	09/21/01	12:00	Jps
2301	09/18/01	11:06	Jps	1207	09/21/01	3:16	Jps
2304	09/18/01	12:45	Jps	1105	09/11/01	1:50	Jps
2302	09/18/01	9:42	Jps	2103	09/19/01	1:24	Jps
2303	09/18/01	1:32	Jps	2203	09/19/01	10:55	Jps
2104	09/18/01	12:00	Jps	3302	09/24/01	7:22	Jps
1303	09/09/01	2:00	Jps	3108	09/24/01	8:19	Jps
1205	09/11/01	9:03	Jps	3301	09/24/01	9:30	Jps
1208	09/21/01	7:45	Jps	3201	09/24/01	10:23	Jps
1204	09/13/01	12:43	Jps	3102	09/24/01	11:16	Jps
1310	09/10/01	1:50	Jps	2107	09/21/01	6:17	Jps
2205	09/19/01	8:28	Jps	2214	09/20/01	1:05	Jps
2210	09/19/01	9:35	Jps	2212	09/18/01	4:20	Jps
2311	09/19/01	12:32	Jps	2209	08/31/01	11:58	Jps
2312	09/19/01	11:45	Jps	2204	09/23/01	11:07	Jps
2108	09/20/01	9:53	Jps	2206	09/23/01	12:13	Jps
2101	09/18/01	2:26	Jps	2309	09/19/01	6:51	Jps
2102	09/18/01	8:53	Jps	2310	09/19/01	7:42	Jps
2105	09/18/01	3:16	Jps	2208	09/18/01	7:39	Jps
2202	09/20/01	11:43	Jps	2211	08/31/01	12:55	Jps
2213	09/19/01	2:48	Jps	3202	09/25/01	9:53	Jps
3204	09/07/01	1:10	Jps	3305	09/23/01	1:19	Jps
3107	09/07/01	2:52	Jps	3203	09/09/01	6:59	Jps
3101	09/07/01	1:57	Jps	3103	09/09/01	7:55	Jps
3104	09/08/01	2:35	Jps	3311	09/23/01	2:16	Jps
1306	09/11/01	2:40	Jps	3206	09/25/01	4:12	Jps
1101	09/11/01	12:50	Jps	3105	09/23/01	3:36	Jps
1206	09/09/01	10:42	Jps	3303	09/07/01	12:13	Jps
1203	09/09/01	9:05	Jps	3304	09/24/01	4:07	Jps
1104	09/10/01	11:40	Jps	3106	09/07/01	11:22	Jps
1311	09/10/01	12:30	Jps	1305	09/11/01	3:35	Jps
1107	09/10/01	2:52	Jps	1302	09/21/01	9:49	Jps
1321	09/10/01	4:10	Jps	1301	09/21/01	8:52	Jps
1108	09/11/01	9:58	Jps	1201	09/25/01	12:40	Jps
1106	09/11/01	10:56	Jps	1304	09/09/01	1:08	Jps
1103	09/11/01	12:04	Jps	2305	09/20/01	3:23	Jps
1102	09/10/01	10:06	Jps	2306	09/20/01	2:31	Jps

Appendix B: Summary Data by Site

North Region										
SiteID	Dr Blt	PsgRBlt	#Psgrs	# Obs	DrRt	OccRt	Location	Town	AAADT	Class
Hi Volume Sites										
1101	109	13	18	127	85.8%	84.1%	89 Exit 8	Montpelier	20,900	Prim
1102	57	25	28	89	64.0%	70.1%	US 2 at I 91	St. Johnsbury	5,900	Prim
1103	57	7	12	73	78.1%	75.3%	State Hwy at National Life Dr	Montpelier	11,900	Prim
1104	71	18	35	125	56.8%	55.6%	US 2 at S.Main St.	St. Johnsbury	9,100	Prim
1105	50	15	16	65	76.9%	80.2%	89 Exit 5	Williamstown	12,200	Prim
1106	108	18	27	139	77.7%	75.9%	Berlin St. at US 2	Montpelier	4,560	Prim
1107	9	0	1	10	90.0%	81.8%	91 Exit 24	Lyndon	4,200	Prim
1108	47	13	21	83	56.6%	57.7%	US 302/Barre-Montpelier Rd. at US 2	Montpelier	14,600	Prim
Medium Volume Sites										
1201	45	8	18	73	61.6%	58.2%	VT 15 at VT 108N	Cambridge	5,800	Prim
1202	10	4	6	14	71.4%	70.0%	VT 100 at Village Rd.	Warren	1,400	Prim
1203	142	73	111	246	57.7%	60.2%	US 7 at VT 105	St. Albans city	15,400	Prim
1204	26	11	17	44	59.1%	60.7%	VT 16 at Belfry Rd.	Hardwick	1,800	Prim
1205	41	10	11	59	69.5%	72.9%	VT 14 at US 2/Quaker Rd.	East Montpelier	3,500	Prim
1206	49	31	47	84	58.3%	61.1%	VT 105 at Noyes St./Harlem St.	Richford	2,800	Prim
1207	237	46	70	340	69.7%	69.0%	VT 100 at Stowe St./Blush Hill Rd.	Waterbury	17,300	Prim
1208	27	2	3	45	60.0%	60.4%	Fairlee State Hwy at US 5	Fairlee	4,200	Prim
1209	18	12	23	37	48.6%	50.0%	VT 105/Highland Ave at VT 101	Troy	1,400	Prim
Lo Volume Sites										
1301	5	3	3	11	45.5%	57.1%	N. Pleasant St. at Goshen Rd.	Bradford	9598	Prim
1302	0	0	0	1	0.0%	0.0%	Chase Hollow Rd. at VT 25	Bradford	9598	Prim
1303	21	6	13	27	77.8%	67.5%	N. Derby Rd. at Lindsey Rd.	Derby	9513	Prim
1304	21	10	18	33	63.6%	60.8%	Shattuck Hill Rd. at Crawford Rd.	Derby	9513	Prim
1305	134	21	35	196	68.4%	67.1%	Airport Rd. at Miller Rd.	Barre	9554	Prim
1306	62	11	17	85	72.9%	71.6%	VT 63 at Cheney Rd.	Barre	9554	Prim
1307	6	0	0	10	60.0%	60.0%	North Rd. at Cross Rd.	Waitsfield	9557	Prim
1308	5	1	3	11	45.5%	42.9%	Common Rd. at North Rd.	Waitsfield	9557	Prim
1310	74	13	25	116	63.8%	61.7%	Center St. at Park Ave.	Lyndon	9573	Prim
1311	58	11	19	106	54.7%	55.2%	Eastern Ave. at Cherry St.	St. Johnsbury	9574	Prim
1312	5	0	0	6	83.3%	83.3%	Forest Ave. at Theodore Roosevelt Hwy	St. Johnsbury	9574	Prim
1321	11	3	4	15	73.3%	73.7%	College Rd. at S. Wheelock Rd.	Lyndon	9573	BkUp
South Region										

SiteID	Dr Blt	PsgRBlit	#Psgrs	# Obs	DrRt	OccRt	Location	Town	AAADT	Class
Hi Volume Sites										
2101	117	23	39	166	70.5%	68.3%	US 7/S. Main St at Madison St.	Rutland city	21,900	Prim
2102	65	23	29	103	63.1%	66.7%	US 7 at Post Rd.	Rutland town	16,700	Prim
2103	85	22	45	156	54.5%	53.2%	VT 9 at Beech St.	Bennington	10,800	Prim
2104	116	24	47	201	57.7%	56.5%	West St. at Pine St.	Rutland city	10,450	Prim
2105	190	53	80	270	70.4%	69.4%	US 4 at Shopping Center	Rutland town	13,800	Prim
2106	143	32	39	189	75.7%	76.8%	89 Exit 1	Hartford	19,050	Prim
2107	13	2	2	18	72.2%	75.0%	91 Exit 9	Hartland	10,950	Prim
2108	97	18	27	133	72.9%	71.9%	91 Exit 3	Brattleboro	24,200	Prim
Medium Volume Sites										
2201	21	3	7	37	56.8%	54.5%	VT 142 at Cotton Mill Hill	Brattleboro	4,500	Prim
2202	46	15	19	70	65.7%	68.5%	VT 11 at Paddock Rd.	Springfield	7,700	Prim
2203	13	2	2	25	52.0%	55.6%	Hunt St. West at VT 7A/Harwood Hill Rd.	Bennington	9,740	Prim
2204	34	15	19	44	77.3%	77.8%	Weybridge St. at VT 125/College St.	Middlebury	2,910	Prim
2205	46	7	15	83	55.4%	54.1%	VT 7A at Houghton Lane	Bennington	5,400	Prim
2206	112	70	88	149	75.2%	76.8%	US 7 at VT 17W	New Haven	7,300	Prim
2207	61	18	25	94	64.9%	66.4%	VT 30 at Post Office Rd.	Dummerston	6,500	Prim
2208	117	20	30	157	74.5%	73.3%	US 7 at Arch St.	Pittsford	10,800	Prim
2209	105	30	36	127	82.7%	82.8%	US 4 at Meadow Lake Dr.	Mendon	12,200	Prim
2210	33	5	16	63	52.4%	48.1%	VT 67A at West St.	Bennington	6,300	Prim
2211	21	3	5	33	63.6%	63.2%	VT 30 at Thall Rd.	Poultney	2,400	Prim
2212	110	28	40	176	62.5%	63.9%	VT 30 at Manchester Center	Manchester	4,800	Prim
2213	43	4	10	61	70.5%	66.2%	VT 100 at E. Dover Rd.	Wilmington	4,700	Prim
2214	42	15	25	79	53.2%	54.8%	VT 103 at High St.	Ludlow	7,900	Prim
Lo Volume Sites										
2301	72	9	17	104	69.2%	66.9%	Woodstock Ave. at Bellevue Ave.	Rutland	9630	Prim
2302	19	3	8	35	54.3%	51.2%	North St. Ext. at N. Main St./US 7	Rutland	9630	Prim
2303	58	16	20	88	65.9%	68.5%	Washington St. at Prospect St.	Rutland	9633	Prim
2304	7	1	4	15	46.7%	42.1%	Forest St. at West St./US 4	Rutland	9633	Prim
2305	160	38	54	231	69.3%	69.5%	Central St. at Ford St.	Woodstock	9658	Prim
2306	2	1	1	4	50.0%	60.0%	N. Bridgewater Rd. at VT 12	Woodstock	9658	Prim
2307	108	12	22	163	66.3%	64.9%	Vernon Dr./VT 142 at Frost St.	Brattleboro	9685	Prim
2308	27	2	3	35	77.1%	76.3%	Guilford St. at Maple St.	Brattleboro	9685	Prim
2309	12	1	3	13	92.3%	81.3%	West St. at Park St.	North Bennington	9710	Prim
2310	11	2	2	17	64.7%	68.4%	Harlan Rd. at Matteson Rd.	North Bennington	9710	Prim
2311	64	17	27	100	64.0%	63.8%	South St. at Bryant St.	Bennington	9711	Prim
2312	28	4	8	38	73.7%	69.6%	Monument St. at Elm St.	Bennington	9711	Prim

Chittenden County

SiteID	Dr Blt	P McGrBlt	#Psgrs	# Obs	DrRt	OccRt	Location	Town	AADT	Class
Hi Volume Sites										
3101	88	9	21	122	72.1%	67.8%	VT 116 at Kennedy Drive	South Burlington	10,200	Prim
3102	199	50	67	277	71.8%	72.4%	US 2 at University Heights	Burlington	27,500	Prim
3103	43	15	16	55	78.2%	81.7%	89 Exit 17	Colchester	24,500	Prim
3104	152	64	93	219	69.4%	69.2%	US 7 at Main Street	Winooski	10,700	Prim
3105	173	98	118	235	73.6%	76.8%	US 7 at Bay Road	Shelburne	18,400	Prim
3106	192	29	40	255	75.3%	74.9%	US 2 at East Ave.	South Burlington	43,600	Prim
3107	167	36	44	212	78.8%	79.3%	89 Exit 13	South Burlington	36,000	Prim
3108	88	10	14	121	72.7%	72.6%	VT 127 Connector at North Ave.	Burlington	12,240	Prim
Medium Volume Sites										
3201	68	10	18	105	64.8%	63.4%	Battery St. at College St.	Burlington	19,030	Prim
3202	27	6	8	50	54.0%	56.9%	Pine St. at Main St.	Burlington	5,480	Prim
3203	10	1	1	17	58.8%	61.1%	Mallets Bay Ave. at VT 127 (Lakeshore Dr.)	Colchester	11,160	Prim
3204	91	18	31	131	69.5%	67.3%	White St. at Patchen Rd.	South Burlington	7,240	Prim
3206	112	25	39	152	73.7%	71.7%	VT 2A at East Rd.	Colchester	9,100	BkUp
Lo Volume Sites										
3301	39	7	13	61	63.9%	62.2%	North St at N. Champlain	Burlington	3	Prim
3302	54	10	12	65	83.1%	83.1%	Archibald St. at Winooski Ave	Burlington	3	Prim
3303	143	27	41	196	73.0%	71.7%	Dorset St. at Williston Rd.	South Burlington	33	Prim
3304	337	75	94	420	80.2%	80.2%	Shelburne Rd. at Allen Rd.	South Burlington	33	Prim
3305	17	12	16	27	63.0%	67.4%	Greenbush Rd./Cnty Hwy 22 K at Ferry Rd	Charlotte	35	Prim
3311	27	11	17	32	84.4%	77.6%	Hinesburg Rd at Baldwin Rd	Hinesburg	35	BkUp